



198 **FIREPLACE & STONE CENTRE** 198

TRADITIONAL CONTEMPORARY  
CUSTOM FIREPLACES

198

WOODBURNING & MULTI-FUEL STOVES  
CHIMNEY SYSTEMS

The interior of the Fireplace & Stone Centre is visible through the large glass windows. It features a variety of woodburning and multi-fuel stoves, as well as custom fireplaces. The lighting is warm and focused on the products.

196 **CANTERBURY STONE & MARBLE** 196

CUSTOM GRANITE & MARBLE  
WORKTOPS, TABLES

NATURAL STONE  
SPECSIMENTS

FLOORS & WALLS  
IN NATURAL STONE

The interior of the Canterbury Stone & Marble shop is visible through the large glass windows. It displays a wide range of natural stone and marble samples, including worktops and tables. The shop is well-lit and organized.

# Canterbury Stone & Marble, - Canterbury Road, Birchington

£625,000 Freehold

Office for sale

## Description

If you're looking for a large premises in one of the hottest spots in Birchington with off street parking for six cars then this could be the one for you. This huge premises lends itself to the ability for any growing or already thriving business to be part of a fantastic community, in addition to offering the village another great business. Irrespective of your business the size on offer in addition to the flexibility of this self repairing lease could lend itself to a business centre sublet to multiple business's, restaurants and cafe's the list goes on and on. Available on either a long lease or sale this huge commercial property doesn't come up in the town centre very often.

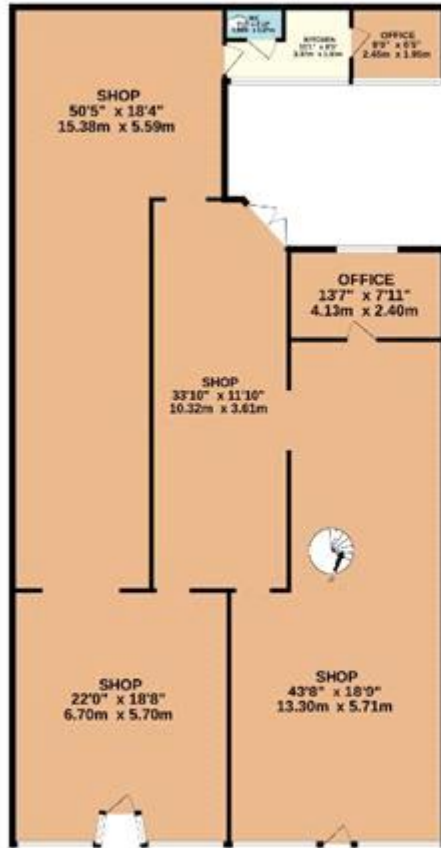
Tenure: Freehold

## Tenure

Freehold



GROUND FLOOR  
1440 sq.ft. (133.7 sq.m.) approx.



1ST FLOOR  
647 sq.ft. (60.0 sq.m.) approx.



2ND FLOOR  
412 sq.ft. (38.1 sq.m.) approx.



TOTAL FLOOR AREA : 3539 sq.ft. (328.8 sq.m.) approx.

While every attempt has been made to ensure the accuracy of the floorplan contained here, measurements of rooms, windows, rooms and any other items are approximate and no responsibility is taken for any error, omission or mis-statement. This plan is for illustrative purposes only and should be used as such by any prospective purchaser. The services, systems and appliances shown have not been tested and no guarantee as to their operability or efficiency can be given.  
Made with Metropix ©2024



Viewing by appointment only  
 Votta Sales and Lettings Limited - Office  
 34 Station Road, Westgate-on-Sea, Kent CT8 8QY  
 Tel: 01843262045 Email: [info@votta.co.uk](mailto:info@votta.co.uk) Website: <https://votta.co.uk/>

